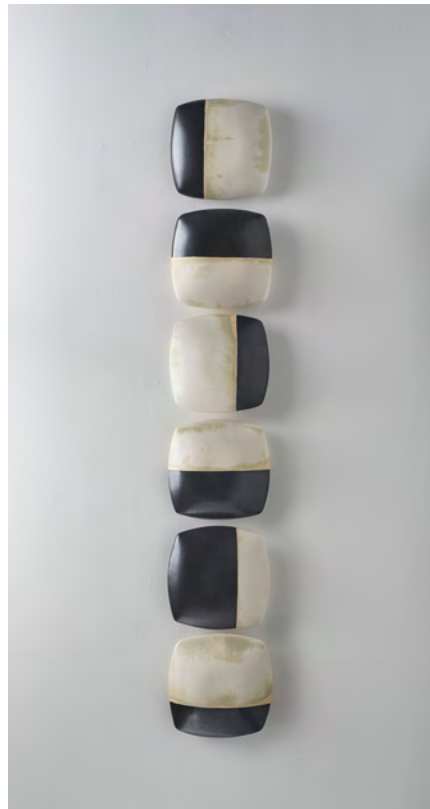


# HOSTLER BURROWS



**MAREN KLOPPMANN** (German, b.1962)  
*Wall Pillows Black and White*, 2016  
hand-built porcelain with custom glaze, 6  
elements  
48"H x 7.5"W x 2.25"D

# HOSTLER BURROWS

Maren Kloppmann is a ceramic artist renown for her architectonic wall sculptures. Both her large and small-scale installations are a study in the reconciliation of the divergent qualities of natural and man-made structures by creating a visual dialog between the two aesthetic aspects.

Kloppman was born in Germany in 1962 and raised in Veerssen. In 1981, Kloppmann undertook a three-year apprenticeship at Keramik Handwerkskammer for production pottery. Upon receiving her Journeyman degree in 1984, Kloppmann travelled to the United States to pursue a yearlong studio assistantship in Iowa City, and completed several artist-in-residencies in North Carolina and Michigan. She later received her undergraduate degree at the Kansas City Art Institute in 1993, and her master's degree at the University of Minnesota in 1996.

After a 17-year career in functional ceramics, Kloppmann began experimenting with volume and proportion. Taking inspiration from both her urbane working environment, and the austere simplicity of her studio and wooden treadle, Kloppmann describes her style as the "visual confluence between control and serendipity," and it is obvious that each of her sculptures, handcrafted from soft clay slabs, embody a balance between precision in design and the subtlety of the artist's touch.

Kloppmann creates sculptural wall installations and porcelain vessels, employing a combination of techniques that include throwing, slab building and coiling, with an apparent focus on the three dimensional space that the pieces occupy. Her objective developed from utilitarianism into the artistic reconstitution of space, which she achieves through the creation of porcelain sculpture in shapes of definitive relief, depth, texture and color. She also pursues specific means of presentation, such as wall mounting, in which her sculptures appear to manipulate sources of light. This is ultimately how Kloppmann's *Shadow Wall Pillow* series was conceived.

The resulting artworks are stable, contained shapes, often in modular repetition. The juxtaposition of colored glazes creates soft tensions and unique geometries. Her works can appear at once organic and architectural; they are minimalist studies in the precision of line, volume and form that blur the boundaries between craft design and fine art.

Maren Kloppman currently lives and works in Minneapolis, Minnesota, where she operates her own studio and gallery. She is a three-time McKnight Fellow, and her awards include a Jerome Fellowship and five Minnesota State Arts Board grants. Her work is represented in numerous museums including the Crocker Museum of Art, Sacramento CA, the Frederik R. Weisman Art Museum, Minneapolis MN, the Herberger Museum of Art & Design, Tempe AZ, the Historical Society of Minnesota, St. Paul MN, the Minneapolis Institute of Arts, Minneapolis MN, the Nelson-Atkins Museum of Art, Kansas City MO and the Tweed Museum of Art, Duluth MN.

3 5 E 1 0 t h S T • N E W Y O R K , N Y 1 0 0 0 3

p h o n e 2 1 2 3 4 3 0 4 7 1 • f a x 2 1 2 3 4 3 0 4 7 2

i n f o @ h o s t l e r b u r r o w s . c o m • h o s t l e r b u r r o w s . c o m

# HOSTLER BURROWS

## MAREN KLOPPMANN

Born: 1962 in Veerssen, Germany

### **Education**

- 1993-1996 Master of Fine Art. University of Minnesota, Minneapolis, MN
- 1989-1993 Bachelor of Fine Art. Kansas City Art Institute, Kansas City, MO
- 1981-1984 Journeyman Diploma. Keramik Handwerkskammer, Germany

### **Awards**

- 2014 Minnesota State Arts Board Artists Initiative Grant
- 2009 McKnight Artist Fellowship administered by Northern Clay Center  
Minnesota State Arts Board Artist Initiative Grant, St. Paul, MN
- 2005 McKnight Artist Fellowship administered by Northern Clay Center  
Minnesota State Arts Board Artist Initiative Grant, St. Paul, MN
- 2002 McKnight Artist Fellowship administered by Northern Clay Center  
Minnesota State Arts Board Career Opportunity Grant, St. Paul, MN
- 2001 Minnesota State Arts Board Fellowship, St. Paul, MN
- 1998 Jerome Artist Project Grant, administered by Northern Clay Center
- 1996 Zelda Berman Fliegel Memorial Scholarship, University of Minnesota
- 1994-96 Dayton Hudson Foundation Intern Fellowship, Minneapolis MN
- 1994 Brown/MacKenzie Art Scholarship, University of Minnesota
- 1993 Graduate School Fellowship, University of Minnesota

### **Solo and Two Persons Exhibitions**

- 2019 Hostler Burrows Gallery, New York, NY (forthcoming)
- 2013 Harvey Meadows Gallery, Aspen CO. Del Harrow & Maren Kloppmann
- 2012 Circa Gallery, Minneapolis MN. Maren Kloppmann & Ellen Richman
- 2010 Circa Gallery, Minneapolis MN. Rebecca Crowell & Maren Kloppmann
- 2009 Signature, Atlanta GA. Maren Kloppmann & Nancy Selvin
- 2008 The Clay Studio, Philadelphia PA. In the Niche
- 2007 Harvey Meadows Gallery, Aspen CO. Maren Kloppmann
- 2006 Trax Gallery, Berkeley CA. Minimal Contrast  
University Gallery, La Crosse WI. Blueprints 01
- 2005 LillStreet Art Center, Chicago IL. Maren Kloppmann
- 2004 Akar Architecture & Design, Iowa City IA. Spatial Containment
- 2003 Santa Fe Clay, Santa Fe NM. Maren Kloppmann  
Red Star Studios, Kansas City MO. Thresholds
- 2002 Galerie b15, Munich, Germany. Maren Kloppmann
- 2001 Akar Architecture & Design, Iowa City IA. Space and Form  
Rochester Art Center, Rochester MN. Yellow

### **Selected Group Exhibitions**

- 2018 Design Miami / Basel, Hostler Burrows, Basel, Switzerland (forthcoming)  
FOG Design + Art, Hostler Burrows, San Francisco, CA
- 2017 Design Miami, Hostler Burrows, Miami, FL

# HOSTLER BURROWS

- The SALON Art + Design, Hostler Burrows, New York, NY  
Design Miami / Basel, Hostler Burrows, Basel, Switzerland  
TEFAF New York Spring, Hostler Burrows, New York, NY
- 2016 Design Miami, Hostler Burrows, Miami, FL  
The SALON Art + Design, Hostler Burrows, New York, NY  
Expo Chicago, Hostler Burrows, Chicago, IL  
Design Miami / Basel, Hostler Burrows, Basel, Switzerland  
Winter Antiques Show, Hostler Burrows, New York, NY
- 2015 Design Miami, Hostler Burrows, Miami, FL  
The SALON Art + Design, Hostler Burrows, New York, NY  
Expo Chicago, Hostler Burrows, Chicago, IL  
Design Miami / Basel, Hostler Burrows, Basel, Switzerland  
FOG Design + Art, Hostler Burrows, San Francisco, CA
- 2014 Design Miami, Hostler Burrows, Miami, FL  
The SALON Art + Design, Hostler Burrows, New York, NY  
Six Women, Hostler Burrows, New York, NY  
FOG Design + Art, Hostler Burrows, San Francisco, CA
- 2013 Texas State University, San Marcos TX. New Century Modern  
NCECA, Fine Arts Museum, Houston TX. New Century Modern II  
Santa Fe Clay, Santa Fe NM. The Sum of its Parts  
Weinstein Gallery, Minneapolis MN. Winter 2012-2013
- 2012 Southwestern University, Georgetown TX. Culinary Cultures  
Harvey Meadows Gallery, Aspen CO. 3 Artists: New Work.  
Parkland Art Gallery, Champaign IL. National Biennial Ceramics Invitational  
The Clay Studio, Philadelphia PA. Small Favors VII  
Penland Gallery, Penland NC. Artist Plates  
Minnetonka Art Center, Minneapolis MN. Minnesota Artists
- 2011 Penland Gallery, Penland NC. Many Paths: A Legacy of Karen Karnes  
LillStreet Art Center, Chicago IL. Minnesota Nice  
The Clay Studio, Philadelphia PA. Small Favors VI  
Arts Center of Saint Peter, St. Peter MN. McKnight Traveling Exhibition  
Owatanna Art Center, Owatanna MN. McKnight Traveling Exhibition  
Paradise Center for the Arts, St. Faribault MN. McKnight Traveling Exhibition  
Clay Art Center, Port Chester NY. Guess Who's Coming to Dinner  
LillStreet Art Center, Chicago IL. 35th Anniversary Show  
Crocker Museum of Art, Sacramento CA. The Vase And Beyond
- 2010 Harvey Meadows Gallery, Aspen CO. 5 Utilitarian Voices  
Cross MacKenzie Ceramic Arts, Washington DC. Snow White  
Santa Fe Clay, Santa Fe NM. Bricks & Mortar  
Worcester Center for Crafts MA. Vases of Spring  
The Clay Studio, Philadelphia PA. Small Favors V  
Kansas City Art Institute, MO. H&R Block Art Space (Re)Form  
Clay Center, Minneapolis MN. 6 McKnight Artists  
Baltimore Clayworks, Baltimore MD. Encore!  
Mashiko Municipal Ceramic Museum, Mashiko Japan. Midwest Potters

# HOSTLER BURROWS

- The Society of Arts & Crafts, Boston MA. Our Cups Runneth Over  
Worcester Center for Crafts MA. Joy of Bowls  
Minneapolis Institute of Arts, MN. Basins, Baskets and Bowls  
The Nelson-Atkins Museum of Art, Kansas City MO. Creating & Collecting  
MN Museum of American Art, St. Paul MN. Ceramics Then / Ceramics Now  
Gallery Gen, New York NY. MacKenzie & Midwest Potters
- 2009 Circa Gallery, Minneapolis MN. Summer Group Show  
The Nevica Project, An Online Exhibition. Collect  
Weinstein Gallery, Minneapolis MN. Art & Objects  
Santa Fe Clay, Santa Fe NM. Abstraction  
Wayne Art Center, Wayne PA. Hand-built National  
The Clay Studio, Philadelphia PA. Small Favors IV  
Dow Studio, Deer Isle ME. Summer of Love  
Promega Corporation, Madison WI. Northern Exposure  
2008 Freehand Gallery, Los Angeles CA. Functional Variations  
The Society of Arts & Crafts, Boston MA. Our Cups Runneth Over  
Worcester Center for Crafts MA. The Art of Dining  
Trax, Berkeley CA. Double Chamber: from the kilns of MN and WI  
Lillstreet Art Center, Chicago IL. Distinctive Line.  
Cervini Haas, Scottsdale AZ. Ceramic Invitational 2008  
Northern Clay Center, Minneapolis MN. Exquisite Pots  
The Clay Studio, Philadelphia PA. Small Favors III  
Santa Fe Clay at NCECA, Pittsburgh PA. La Mesa  
Clay Art Center, Port Chester NY. Potpourri: Pots that Pour  
Red Star Studio, Kansas City MO. 10th Anniversary Show
- 2007 The Clay Studio, Philadelphia PA. Gifted  
Lacoste Gallery, Concord MA. From the Studio  
Cervini Haas Gallery, Scottsdale AZ. Teapot Invitational 2007  
Dowstudio, Deer Isle ME. Annual Clay National  
Northern Clay Center, Minneapolis MN. Eat With Your Eyes  
Baltimore Clayworks, Baltimore MD. Winterfest 2007  
Main Street Art Gallery, Edwardsville IL. Hand Held Drinking Vessels  
Long Beach Island Foundation NJ. Table Tops  
Greenwich House Pottery, New York NY. Made in Clay  
Santa Fe Clay, Santa Fe NM. Unadorned  
The Clay Studio, Philadelphia PA. Small Favors II  
Ball State University, Muncie IN. Contrast: Explorations in Black & White  
Crossman Gallery, Whitewater WI. 37th Annual Ceramics Exhibition  
Akar Architecture & Design, Iowa City IA. Yunomi Invitational  
The Clay Studio, Philadelphia PA. Flower Power: Vessels of Containment  
Clay Art Center, Port Chester NY. Cups Coming Together  
Santa Fe Clay at NCECA, Louisville KY. La Mesa  
Goodall Gallery, Louisville KY. Women Who Work In Porcelain
- 2006 Gallery Gen, New York NY. Warren MacKenzie and the Midwest Five  
Northern Clay Center, Minneapolis MN. McKnight Exhibition

# HOSTLER BURROWS

- Lill Street Gallery, Chicago IL. 30/30  
Japanese Garden Gallery, Portland OR. Pots in Portland: 15 Approaches  
Archer Gallery, Clark College, Vancouver WA. Minimal/ist  
Santa Fe Clay at NCECA, Baltimore MD. For the Table  
Worcester Center for Crafts, Worcester MA. Sitting Pretty  
Weinstein Gallery, Minneapolis MN. Less is more/ more or less  
Akar Architecture & Design, Iowa City IA. 30 x 5  
2005 Akar Architecture & Design, Iowa City IA. 30 x 5  
Santa Fe Clay at NCECA, Baltimore MD. For the Table  
Santa Fe Clay, Santa Fe NM. The Flowers that Bloom in the Spring  
Santa Fe Clay, Santa Fe NM. The Box. White. American Master.  
The Clay Studio, Philadelphia PA. Minimal  
Trax Gallery, Berkeley CA. 4 Minnesota Potters. (Juror's Award)  
Bedford Gallery, Walnut Creek CA. Pots: Objects of Virtue  
Lill Street Gallery, Chicago IL. The Contemporary Cup  
2004 Cudgegong Gallery, Gulgong, Australia. Clay Modern Masters Exhibition  
Blue Dome Gallery, Silver City NM. Soda Fired  
Galerie Handwerk, Munich, Germany. Faszination Porzellan  
Birke Art Gallery, Huntington WV. Working Potters: Mentors and Colleagues  
Santa Fe Clay at NCECA, Baltimore MD. For the Table  
Earth And Fire, Vienna VA. Thinking outside the Box  
LillStreet Art Center, Chicago IL. Small Treasures  
2003 Ferrin Gallery, Lenox MA. Studio Pottery Invitational  
Northern Clay Center, Minneapolis MN. McKnight Exhibition  
The Fuller Museum of Art, Brockton MA. Container - Content  
galerie b 15, Munich Germany. Kuenstler der Galerie  
Odyssey Gallery, Asheville NC. Women in Clay: Pots for Daily Use  
Santa Fe Clay, Santa Fe NM. Soda Fired Porcelain, Wood Fired Stoneware  
Red Star Studios, Kansas City MO. Architectural Allusions  
Worcester Center for Crafts, MA. Dinner is served  
2002 LillStreet Art Center, Chicago IL. Peter Beasecker/ Maren Kloppmann  
The Signature Shop & Gallery, Atlanta GA. Functional Foursight  
Freehand, Los Angeles CA. Centering: Clay & the Midwest  
Minnetonka Center for the Arts, Minnetonka MN. Thirteen Minnesota Artists  
Red Star Studio, Kansas City MO. Porcelain: Another Touch  
Northern Clay Center, Minneapolis MN. American Pottery Festival  
Phipps Center for the Arts, Hudson WI. Uncanny Visions  
Augustana College Art Gallery , Rock Island IL. Fresh American Perspectives

## **Installation Commissions**

- 2013 Private Residence, Minneapolis MN  
Private Residence, Minneapolis MN  
2012 Private Residence, Minneapolis MN  
Humboldt Lofts, Minneapolis MN  
Emerson Process Management, Bloomington MN

# HOSTLER BURROWS

- Mill City District Loft, Minneapolis MN
- 2011 Private Residence, Minneapolis MN
- Private Residence, Lake Michigan WI
- Axis Insurance, St. Paul MN
- Private Residence, Apple Valley MN
- Private Residence, Eagan MN
- Plymouth Congregational Church, Minneapolis MN
- 2008 The Westin Hotel Galleria, Edina MN.

## **Professional Experience**

- 2013 MNArtists.org, Minneapolis MN. CSA Juror
- 2010 MN Regional Arts Council, St. Paul MN. Art Grants Panel
- Northern Clay Center, Minneapolis MN. E-Commerce Panel
- 2006-2010 Northern Clay Center, Minneapolis MN. Exhibition Committee
- 2004 Akar Architecture & Design, Iowa City IA. Juror for "Box Exhibition"
- 2004 Regis Center of Art, University of Minnesota. Panel: Collector's Forum
- 2003 Northern Clay Center, Minneapolis MN. Jerome Grant Juror
- 1996-1999 Exhibition Coordinator at Northern Clay Center, Minneapolis MN
- 1988-1989 Artist-in-Residence at Pewabic Pottery, Detroit MI

## **Teaching Experience**

- 2002-2004 Minneapolis College of Art & Design. (Mentor in MFA Visual Arts Program)
- 1999-2002 University of Wisconsin, River Falls, WI. Adjunct Faculty (Introduction to Art)
- 1999 University of Wisconsin, River Falls, WI. Adjunct Faculty (Beginning Ceramics)
- 1998 University of Minnesota, Minneapolis. Adjunct Faculty (Interm. Ceramics)

## **Workshops, Lecture, Panels**

- 2013 Weisman Art Museum, ArtMob Artist Lecture, Minneapolis MN
- 2012 University of Minnesota Extension Program, Panel Discussion, St. Paul MN
- 2011 Bethel University, Arden Hills MN
- 2010 Kansas City Art Institute, Kansas City MO
- 2009 Panelist at Northern Exposure. Promega Corporation, Madison WI
- 2007 New York State University at New Paltz, NY
- Minnetonka Center for the Arts, Minnetonka MN
- University of Minnesota, Winona MN
- 2006 University of Nebraska, Lincoln NE
- Northern Clay Center, Minneapolis MN
- Mankato State University, Mankato MN
- 2005 Iowa State University, Cedar Falls IA
- Carleton College, Northfield MN
- 2004 Clay Modern, International Conference, Gulgong, Australia.
- Santa Fe Clay, Santa Fe NM
- 2003 University of Illinois, Edwardsville
- Red Star Studios, Kansas City MO
- Northern Clay Center, Minneapolis MN

# HOSTLER BURROWS

- 2002 University of Wisconsin at Whitewater  
University of Wisconsin, Pigeon Lake WI
- 2001 University of Wisconsin, Pigeon Lake WI  
Minnetonka Center for the Arts, Minnetonka MN  
Northern Clay Center, Minneapolis MN
- 2000 Penland School of Crafts, Penland NC
- 1998 University of Wisconsin, River Falls WI  
Edina Art Center, Edina MN
- 1997 University of Wisconsin, River Falls WI  
Winona State University, Winona MN
- 1996 University of Wisconsin, River Falls WI

## **Publications**

- 2013 Online Publication, Contemporary American Pottery
- 2012 Star Tribune, Collecting Minnesota by Mary Abbe, April 29
- 2011 Modern Magazine, Contemporary Clay, p.125
- 2010 Crocker Art Museum, Catalog of the Swidler Collection, p.252  
McKnight Exhibition Catalog, Essay by Robert Silberman.  
Surfaces, Glazes & Firing by Angelica Pozo.  
Ceramics Monthly, December Issue, Up-Front Feature.
- 2009 Ceramics Monthly, Summer Issue; Focus - Working Potters.  
MPLS/STP Magazine, October Issue; Lifestyle/Eye on Design.
- 2006 Ceramics Monthly, May Issue, Up-Front Feature.  
McKnight Exhibition Catalog, Essay by Robert Silberman.
- 2004 Ceramics: Art and Perception, Issue 55, by Robert Silberman.  
Electric Kiln Ceramics, 3rd Edition, by Richard Zakin.
- 2003 Ceramics Monthly, February '03, Space and Form.  
McKnight Exhibition Catalog, Essay by Robert Silberman.
- 2002 Ceramics: Art and Perception, Issue 48, by Patricia Briggs
- 2001 The Art of Contemporary American Pottery, by Kevin A. Hluch  
Ceramics Mastering the Craft, 2nd Edition, by Richard Zakin  
Ceramics Monthly, February '01, Up-Front, p.26
- 2000 Ceramics Monthly, December '00, Up-Front, p.20
- 1999 Ceramics Monthly, September '99, Up-Front, p.12-14  
American Craft, Feb/Mar '99, Portfolio, p.92  
Contact/Ceramics, a Canadian Perspective, Spring '99 no. 116, p. 47
- 1998 Ceramics Monthly, April/98, Minnesota Invitational, p.47  
Clay Times, Sept/Oct 98, Vessels That Pour, p.14
- 1996 The Best of Pottery, by Angela Fina and Jonathan Fairbanks, p. 69
- 1991 Mastering the Craft, by Richard Zakin, p. 198 Fig. 12-43

## **Permanent Collections**

- Arkansas Art Center, Little Rock AR
- Crocker Art Museum, Sacramento CA
- Frederick R. Weisman Museum of Art, Minneapolis MN



# HOSTLER --- BURROWS

Herberger Museum of Art & Design, Tempe AZ  
Minneapolis Institute of Arts, Minneapolis MN  
Minnesota Museum of American Art, St. Paul MN  
Minnesota Historical Society, St. Paul MN  
Mudgee Art Council, New South Wales, Australia  
Northern Clay Center, Minneapolis MN  
The Nelson-Atkins Museum of Art, Kansas City MO  
Owatonna Arts Center, Owatonna MN  
University of Arkansas, Fayetteville AR  
Tweed Museum of Art, Duluth MN